

Suitable for



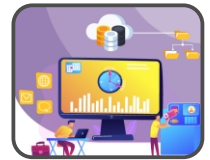
Time and Attendance Management



Access Control in buildings and high security areas



Visitor Management on offices



Cloud based attendance management

TF43

A 4.3" entry level, cost effective AI based Face Recognition Attendance and Access Control all in one terminal

Features



Ultra fast performance and highly secure

- **Processor** : ARM Cortex-A7 Dual Core up to 1 Ghz
- **Recognition Speed** : ≤ 300ms (0.3 Sec) with a recognition accuracy rate ≥ 99%
- **Liveness Detection** : Binocular liveness detection ensures that only real, live faces are recognized, adding an extra layer of security.
- **Industrial-grade (IP 65) Embedded SOC** : Provides robustness and reliability in various environments.
- **Recognition Distance** : 0.3m - 1.5m (1ft. - 5ft.)
- **Day & Night Parameters** : Self-adaptive to different lighting conditions, with wide dynamic range (WDR) and digital noise reduction for high-quality image processing.



Multiple connectivity modes

- **Network Protocols** : Supports TCP/IP, HTTP, FTP, Wiegand, DNS, NTP, MQTT, WEBSOCKET, SDK.
- **Communication Interface** : RJ45 adaptive Ethernet port.
- **Relay Output** : 1-way relay signal output.
- **Wiegand Signal** : Wiegand output for integration with other access control systems.
- **Built-in NFC** : Supports card swiping pass, compatible with NFC compliant cards.
- In built WiFi



High user capacity

- **Face Library** : Supports up to 10,000 faces.
- **Records Storage** : Can store up to 100,000 attendance transaction records.



Multiple ordering options

- Wall mounting
- Turnstile stand
- Handheld with 4 hours optional battery backup



Easily integrated into third party applications

- Has open APIs for transmitting transaction data
- Device management and template management APIs supported

Specification

Biometric	Face
CPU	ARM Cortex-A7 Dual Core up to 1Ghz
Sensor	1/2.8" CMOS
Max. User	3000 (Upgradable to 10,000)
Max. Log	100,000
Recognition mode	Offline dynamic face recognition(1:N)
Recognition distance	0.3m - 1.5m (1ft. - 5ft.)
Liveness detection	Support
Recognition speed	0.3 second
Display	4.3" LCD display
Camera	6mm fixed lenses+6mm infrared lenses
LCD resolution	640 x 352 pixels
Sound	TTS voice broadcast customization
LCD resolution	640 x 352 pixels
Video size	720P (1280*720)
Image Format	JPEG encoding
Supported protocol	TCP/IP, HTTP, FTP, Wiegand, DNS, NTP, MQTT, WEBSOCKET, SDK
Operating Temp.	0 Deg C ~ 50 Deg C
Operating humidity	0% ~ 90% non condensing
Dimension	161(H) X 82(W) X 21(D)mm
Weight	Under 500 gm
Power	DC 12V, 2A
Rubber Protection	Yes (optional)

Communication Platform Software & API's

- **Smart Face** : Web Based Communication Server for Face & Finger Terminal, Template & Data Management with Push Technology
- **PM Neo** : API integration project with HRMS/Payroll/ERP software for Employee Master, Templates, Terminal & Transaction data

T & A Application Software

- **Smart Face Attendance** : Web based Platform Software with Built-in Attendance Management, Leave & OT Module
- **Timely.Bio** : A cloud based attendance management application for Startups/MSMEs

Ordering Information

TF43 : 7" Wall mounting Face Attendance Device

Smart Face : Web Based Communication Server for Face & Finger Terminal, Template & Data Management with Push Technology over MQTT protocol

Optionals :

- **OPT 03** : Built in ID+IC Reader
- **OPT 05** : Built in Wifi
- **OPT 06** : External Battery Back-up